

# Wi(th-e)Red Tree

(For Wind Symphony)

(2019)





# Instruments:

4 flutes

2 oboes

3 Bb clarinets

1 bass clarinet

1 soprano saxophone

1 alto saxophone

1 tenor saxophone

1 baritone saxophone

1 bass saxophone

2 bassoons

4 horns

3 trumpets

3 trombones (2 tenor and 1 bass)

1 tuba

timpani

5 percussionists

I: vibraphone, whip, piano, and suspended cymbal

II: tam-tam, crotales, and temple blocks

III: bass drum, string drum, suspended cymbal, and glockenspiel

IV: snare drum, 1 medium size tom, piano, flexatone, and suspended cymbal

V: tubular bells, and tam-tam

1 harp

1 piano

1 double bass

# Performance Notes:

Half Sharp: This means the note should be a bit lower than the actual sharp.  
Example: G half sharp is a tone half way in between G natural and G sharp



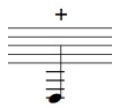
Half flat: This means the note should be a bit higher than the actual flat.  
Example: E half flat is a tone in between E natural and E flat



Arrows indicate gradual shift from one form of playing to another



The occasional plus signs (+) on the low notes of the piano part indicate muting.  
It requires from the pianist to press down on the bottom end of the string while playing the note to create a percussive effect



The letter M on a note indicates playing any multiphonic on the given fundamental



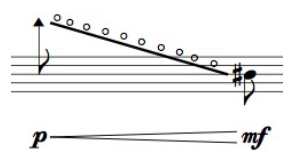
The beaming on top of a note indicates a fast bisbigliando



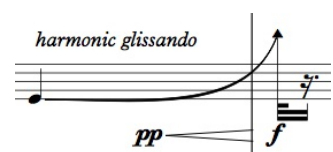
The beaming with rhythm on top of a note indicates a bisbigliando with the rhythm of the beaming



Harmonic glissando in horns and trombones to or from highest partial possible



Harmonic glissando in the bass clarinet in exponential manner







4

2/4 4/8 3/8 =100 4/8

Fl. 1 air; white noise *ppp* *f* *ppp* *fff* air jet whistle *gliss.* *ord.* *p* *p*

Fl. 2 air; white noise *ppp* *f* *ppp* *fff* air jet whistle *gliss.* *ord.* *p* *p* *f*

Fl. 3 air *p* *f* *ppp* *fff* air jet whistle *gliss.* *ord.* *ppp*

Fl. 4 air *p* *f* *ppp* *fff* air jet whistle *gliss.* *ord.* *ppp* *p*

Cl. 1 *f* *f* *pp* *p*

Cl. 2 *f* *f* *pp* *f*

Cl. 3 *f* *pp* *f* *p*

B. Cl. *f* *f* *pp* *f* *pp* *gliss.*

Sop. Sax. air; white noise *ff* *p* *mf*

Alto Sax. air; white noise *ff* *p* *mf*

Ten. Sax. air; white noise *ff* *p* *mf*

Bari. Sax. *mf* *pp*

Bass Sax. *mf* *pp*

Hn. 1 air; white noise *p* *f* *mf* *mp* *p* *mp* *mp* *ppp*

Hn. 2 4. air; white noise *ppp* *f* *mf* *mp* *p* *mp*

Hn. 3 lip vib. *mf* *mp* *p* *mp*

Hn. 4 lip vib. *mf* *mp* *p* *mp*

C Tpt. 1 *mf* *mp* *p* *mp*

C Tpt. 2 lip vib. *mf* *mp* *p* *mp*

Tbn. 1 slide vib. *ppp* *f* *mf* *mp* *p* *mf*

Tbn. 2 slide vib. *ppp* *f* *mf* *mp* *p* *mf*

B. Tbn. slide vib. *mf*

Tba. *pp* *mf* *mp*

2/4 4/8 3/8 =100 4/8

Timp. *mf* *mp* *ppp*

Percussion 1 (piano) Whip *f* *mf* *ppp* *mf* *ppp* *mf* *pp* *mf* *ppp*

T.-t. choke *f* *mf* *ppp* *mf* *ppp* *mf* *pp* *mf* *ppp*

B. D. bass drum; super ball mallet string drum *ppp* *mf* *ppp* *mf* *pp* *mf* *ppp*

S. D. *ppp* *mf* *pp* *mf* *ppp*

Tub. B. *f* *mp* *ff*

Hp. *f* *ppp*

Pno. *f* *mf* *ppp* *mf* *ppp* *mf* *ppp*

Cb. *f* *mf* *ppp* *mf* *ppp* *mf* *ppp*

4/8

Fl. 1 *f* *mp* *ppp*

Fl. 2 *mp* *ppp* *p* *mp* *ppp*

Fl. 3 *p* *mp* *p* *ppp*

Fl. 4 *mp* *ppp*

Cl. 1 *f* *mp* *p* *mp* *ppp*

Cl. 2 *mp* *p* *p* *mp* *ppp* *ppp*

Cl. 3 *f* *mp* *ppp*

B. Cl.

Sop. Sax. *mp*

Alto Sax. *mp*

Ten. Sax. *mp*

Bsn. 1 *mp* 5

Bsn. 2 *mp* 5

Hn. 1 *p* *ppp*

Hn. 3 *p* *ppp*

Hn. 4 *p* *ppp*

C. Tpt. 1 *p* *ppp*

C. Tpt. 2 *mp* *p* *ppp*

C. Tpt. 3 *p* *ppp*

Tbn. 1 *p* *mf* *p* *pp* *mp* *ppp* *ppp* *p* *mp* *p*

Tbn. 2 *p* *mf* *p* *pp* *mp* *ppp* *ppp* *p* *mp* *p*

B. Tbn. *mp* *ppp*

Tba. *p* *ppp*

4/8

Timp.

Vib.

Crot.

Cym. *mp*

S. D. *To Tom-t.* *n*

Tub. B.

Hp. *mp* *ppp*

Pno. *p* *ppp* 3

Cb. *p* *ppp*

22

Fl. 1  
Fl. 2  
Fl. 3  
Fl. 4

Ob. 1  
*mp* *p*

Ob. 2  
*mp* *p*

Cl. 1  
Cl. 2  
Cl. 3  
B. Cl.

Sop. Sax.  
*p*

Alto Sax.  
*p*

Ten. Sax.  
*p*

Bari. Sax.  
Bass Sax.

Bsn. 1  
*p*

Bsn. 2  
*p*

Hn. 1  
2  
Hn. 3  
4

C Tpt. 1  
C Tpt. 2  
3

Tbn. 1  
*f* *p* *mp* *p* *mp* *p* *f* *p*

Tbn. 2  
*f* *p* *mp* *pp* *mp* *p* *f* *p*

B. Tbn.  
*p* *f* *ppp* *p* *f* *p*

Tba.

Timp.

Vib.  
Crot.

Cym.  
S. D.

Tub. B.

Hp.

Pno.

Cb.  
*pp*

IV



33 **4/8** **2/2** **3/8**

Fl. 1 *f*

Fl. 2 *f*

Fl. 3 *f*

Fl. 4 *f*

Ob. 1 *mf* *p*

Ob. 2 *mf* *p*

Cl. 1

Cl. 2

Cl. 3

B. Cl.

Sop. Sax. *mf* *p*

Alto Sax. *mf* *p*

Ten. Sax. *mf* *p*

Bsn. 1 *mf* *p*

Bsn. 2 *mf* *p*

Hn. 1 *mp* *ppp*

Hn. 2 *mp* *ppp*

Hn. 3 *mp* *ppp*

Tbn. 1 *mf* *ppp*

Tbn. 2 *mf* *ppp*

B. Tbn. *mf* *ppp*

**4/8** **2/2** **3/8**

Timp.

Vib. *f*

T. - t. *mf*

Cym. *n*

S. D.

Tub. B.

Hp. *f*

Pno. *f*

Cb. *f*



42

Fl. 1 *f*

Fl. 2

Fl. 3 *f*

Fl. 4

Ob. 1

Ob. 2

Cl. 1 *f* *mf* *f* (b $\flat$ )

Cl. 2 *p* *f* *p* *mf* *f* (b $\flat$ )

Cl. 3 *f* *mf* *f* (b $\flat$ )

B. Cl. *p* *f* *p*

Sop. Sax.

Alto Sax.

Ten. Sax.

Bari. Sax. *f*

Bass Sax. *p* *f* *p*

Bsn. 1

Bsn. 2

Hn. 1 *mp*

Hn. 2 *mp*

Hn. 3 *mp* *f*

Hn. 4 *f* *mp* *mp* *f*

C Tpt. 1 *f*

C Tpt. 2 *mp* *mute*

C Tpt. 3 *mp* *mute*

Tbn. 1 *f* *p* *f*

Tbn. 2 *f* *p* *f*

B. Tbn. *f* *p* *f* *f* *pp* *f*

Timp. *ff* *mf* *ff* *mf* *ff* *mf* *ff* *mf* *ff* *mf*

B. D. Bass Drum *pp*

Hp.

Pno. *f* *ff* *f* *ff*

Cb. *ff* *ff* *f* *ff*

R.H.





53 **4/8**

Fl. 1  
Fl. 2  
Fl. 3  
Fl. 4  
Ob. 1  
Ob. 2  
Cl. 1  
Cl. 2  
Cl. 3  
B. Cl.  
Sop. Sax.  
Alto Sax.  
Ten. Sax.  
Bari. Sax.  
Bass Sax.  
Bsn. 1  
Bsn. 2  
Hn. 1  
Hn. 2  
Hn. 3  
Hn. 4  
C Tpt. 1  
C Tpt. 2  
C Tpt. 3  
Tbn. 1  
Tbn. 2  
B. Tbn.  
Tba.  
**4/8**  
Timp.  
Vib.  
T. Bl.  
S. D.  
Hp.  
Pno.  
Cb.



65

Fl. 1 *pp* *p* *mf* *ppp* *p* *ff*  
 air; white noise bend exponentially

Fl. 2 *pp* *p* *mf* *ppp* *p* *ff*  
 air; white noise bend exponentially

Fl. 3 *pp* *p* *mf* *ppp* *p* *ff*  
 air; white noise bend exponentially

Fl. 4

Ob. 1 *pp*

Ob. 2

Cl. 1 *p* *mf* *ppp* *p* *mf* *ppp*

Cl. 2 *p* *mf* *ppp* *p* *mf* *ppp*

Cl. 3 *p* *mf* *ppp* *p* *mf* *ppp*

B. Cl.

Sop. Sax. *pp* *mp* *ppp*

Alto Sax. *pp* *mp* *ppp*

Ten. Sax. *pp* *mp* *ppp*

Hn. 1 *p* *ff*  
 air; white noise mouth- piece backwards

Hn. 2 *p* *ff*  
 air; white noise mouth- piece backwards

Hn. 3 *p* *ff*  
 air; white noise mouth- piece backwards

Hn. 4 *p* *ff*  
 air; white noise mouth- piece backwards

Tbn. 1 *f* *p* *f* *p* *f* *p*

Tbn. 2 *f* *p* *f* *p* *f* *p*

B. Tbn.

Tbn.

Timp.

Vib. *mp*

Crot.

Glock. Bass Drum *p* *fp* *ff*  
 metal brush *mp*  
 soft mallet *mp*

Pno.

Tub. B. *mp*

Hp.

Pno.

Cb.



74

Fl. 1 *half tone-half air*

Fl. 2 *half tone-half air*

Fl. 3 *half tone-half air*

Fl. 4 *half tone-half air*

Ob. 1 *mf p pp*

Ob. 2 *mf p pp*

Cl. 1 *ppp*

Cl. 2 *ppp*

Cl. 3 *pp*

B. Cl. *ppp*

Sop. Sax. *pp ppp*

Alto Sax. *pp ppp*

Ten. Sax. *pp ppp*

Hn. 1 *ppp*

Hn. 2 *ppp*

Hn. 3 *ppp*

Hn. 4

C Tpt. 1

C Tpt. 2 *mf p*

C Tpt. 3 *p mf p*

Tbn. 1 *ppp pp*

Tbn. 2 *ppp*

B. Tbn. *ppp*

Tba.

Timp.

Vib.

T.-t.

B. D.

Pno.

Tub. B.

Hp.

Pno.

Cb.

77

Fl. 1

Fl. 2

Fl. 3

Fl. 4

Ob. 1

Ob. 2

Cl. 1

Cl. 2

Cl. 3

B. Cl.

Sop. Sax.

Alto Sax.

Ten. Sax.

Hn. 1

Hn. 2

Hn. 3

Hn. 4

C. Tpt. 1

C. Tpt. 2

C. Tpt. 3

Tbn. 1

Tbn. 2

B. Tbn.

Tbn.

Timp.

Vib.

T. - t.

B. D.

Pno.

Tub. B.

Hp.

Pno.

Cb.

*mp*

*ff*

*f*

*mf*

*mf*

*pp*

*p*

*f*

*p*

*pp*

*pp*

air

slow slide vib;  
gradually speed up  
and narrow vib.

fast narrow vib.

80

Fl. 1

Fl. 2

Fl. 3

Fl. 4

Ob. 1

Ob. 2

Cl. 1

Cl. 2

Cl. 3

B. Cl.

Sop. Sax.

Alto Sax.

Ten. Sax.

Bari. Sax.

Bass Sax.

*mp* *p* *f* *pp* *f* *mp* *f* *pp* *f* *mp* *f* *mp* *f*

4/8

air

*p* *mp* *f* *fp* *mp* *f*

12

5

Hn. 1

Hn. 2

Hn. 3

Hn. 4

C Tpt. 1

C Tpt. 2

C Tpt. 3

Tbn. 1

Tbn. 2

B. Tbn.

Tba.

air; white noise  
mouth- piece backwards

*p*

air; white noise  
mouth- piece backwards

*p*

air; white noise  
mouth- piece backwards

*p*

air; white noise  
mouth- piece backwards

*p*

air

*mp*

air

*mp*

air

*mp*

4/8

Timp.

Vib.

T. t.

B. D.

Pno.

Tub. B.

Hp.

Pno.

Cb.

Tam-tam

metal brush;  
rub skin

scrape with  
triangle beater

*p*

*ppp*

*ppp* *n*

I

*mp*

83

Fl. 1 *f* *pp* slow wide vib.

Fl. 2 *f* *pp* slow wide vib.

Fl. 3 *f* *pp* slow wide vib.

Fl. 4 *f* tone

Ob. 1 *mf*

Ob. 2 *mf*

Cl. 1 *f*

Cl. 2 *f*

B. Cl. *f*

Sop. Sax. *f*

Alto Sax. *f*

Ten. Sax. *f*

Bari. Sax. *ff* *mp* air; white noise

Bass Sax. *ff* *mp* air; white noise

Hn. 1 *f*

Hn. 2 *f*

Hn. 3 *f*

Hn. 4 *f*

C.Tpt. 1 *ff* *mp* air; machine gun tonguing

C.Tpt. 2 *ff* *mp* air; machine gun tonguing

C.Tpt. 3 *ff* *mp* air; machine gun tonguing

Tbn. 1 *ff* *mp* air; machine gun tonguing

Tbn. 2 *ff* *mp* air; machine gun tonguing

B. Tbn. *ff* *mp* air; machine gun tonguing

Timp.

Whip *f* Whip

T.-t. *mf* l.v.

B. D. *f*

Hp.

Pno. *f* *pp* quasi bisbigliando; rapidly play muddy and cloudy to create a unified fabric of sound

Cb. *ff*

88

Fl. 1 *n* *mp* *f* *pp* slow wide vib.

Fl. 2 *n* *f* *pp* slow wide vib.

Fl. 3 *n* *f* *pp* slow wide vib.

Fl. 4 *n* *f* *pp*

Ob. 1 *mf*

Ob. 2 *mf*

Cl. 1 *f* *pp* *f* *pp* *f* *mp* *f*

Cl. 2 *f* *pp* *f* *pp* *f* *mp* *f*

Cl. 3 *f* *mp* *f* *mp* *f* *mp* *f* *pp* *f*

B. Cl. *mp* *f*

Sop. Sax. *ff*

Alto Sax. *ff*

Ten. Sax. *ff*

Bari. Sax. air; white noise *ff*

Bass Sax. air; white noise *ff*

Hn. 1 air; white noise mouth-piece backwards *p* *f*

Hn. 2 air; white noise mouth-piece backwards *p* *f*

Hn. 3 air; white noise mouth-piece backwards *p* *f*

Hn. 4 air; white noise mouth-piece backwards *p* *f*

C.Tpt. 1 air; machine gun tonguing *ff*

C.Tpt. 2 air; machine gun tonguing *ff*

C.Tpt. 3 air; machine gun tonguing *ff*

Tbn. 1 air; machine gun tonguing *ff*

Tbn. 2 air; machine gun tonguing *ff*

B. Tbn. air; machine gun tonguing *ff*

Timp.

Whip

T.-t. scrape with triangle beater *p* *mf* l.v.

B. D. metal brish; rub skin *p* *f*

Pno.

Tub. B.

Hp. *ppp* *n* *mf*

Pno. *ppp* *n* *mf* l.v. +

Cb. *mp* *ff* I



98 **8/8** **4/8** **6/8** **4/8**

Fl. 1 *f* *a* *a* *a*

Fl. 2 *f* *a* *a* *a*

Fl. 3 *f* *a* *a* *a*

Fl. 4 *f* *a* *a* *a*

Ob. 1 *mf*

Ob. 2 *mf* bend

Cl. 1 *pp* *f* *a* *mp* *f*

Cl. 2 *pp* *f*

Cl. 3 *mp* *f* *p* *f*

B. Cl. *pp* harmonic glissando *pp*

Sop. Sax. *pp*

Alto Sax. *pp*

Ten. Sax. *pp*

Bass Sax. *f* *pp*

Hn. 1 *mp* *f* *mp* *mf* *mp* *f* *mp*

Hn. 2 *mp* *f* *mp* *f* *mf* *mp* *f*

Hn. 3 *p* *f* *p* *p* *f* *p*

Hn. 4 *p* *f* *p* *f* *p*

C Tpt. 1 *f* *p* *f* *p*

C Tpt. 2 *p* *f* *p*

Tbn. 1 *p* *f* *mf* *mp* *ff* *p* *f* *mf* *mp*

Tbn. 2 *mp* *f* *mp* *mf* *mp* *ff* *mp* *f* *mf* *mp*

B. Tbn. *mp* *f* *mp* *p* *ff* *mp* *f* *mp*

Tba. *f* *f*

Timp. *f* *f* *f* *f*

Vibraphone *f* 1.v.

T. t. Crotales *f*

B. D. Glockenspiel *f*

Hp. *f* 1.v.

Pno. *f* 1.v.

Cb. *f* *mp* *f* *mp* *pp* IV

102

4/8 6/8 4/8

Fl. 1 *f* *mp* *mp*

Fl. 2 *f* *mp* *mp*

Fl. 3 *f* *mp* *mp*

Fl. 4 *f* *mp* *mp*

Cl. 1 *mp*

Cl. 2 *mp*

Cl. 3 *f* *mp*

B. Cl. *f* *mp* *mp* *mp*

Sop. Sax. *f*

Alto Sax. *p* *f p subito* *f* *f* *f* *mp subito* *f*

Bari. Sax. *f*

Bass Sax. *ff* *mp* *f*

Bsn. 1 *f* *mf* *ff* *mf* *p* *p*

Bsn. 2 *ff* *f* *mp* *f*

Hn. 1 *f* *mf* *p* *f*

Hn. 2 *p* *f*

Hn. 3 *p* *f*

Hn. 4 *f* *ff* *mp*

C Tpt. 1

C Tpt. 2 *f*

C Tpt. 3

Tbn. 1 *ff* *mf* *subito* *f* *p* *mf*

Tbn. 2 *ff* *mf* *subito* *f* *p* *mf*

B. Tbn. *ff* *f* *p* *mf*

4/8 6/8 4/8

Timp. *p* *f* *mp* *pp*

Crot. 1.v.

Glock. 1.v. Bass Drum *f* *p*

Tub. B. 1.v. *f* 1.v. *f*

Hp. *ff* *mf* 1.v. *mp* *play ad lib. rapidly*

Pno. *ff* *mf* 1.v. *mp* *play ad lib. rapidly* *con pedale* *ff* *8<sup>va</sup>*

Cb. *ff*



♩=80

4/8

Fl. 1 *f* *p*

Fl. 2 *f* *p*

Fl. 3 *f* *p*

Fl. 4 *f* *p*

Ob. 1

Ob. 2

Cl. 1

Cl. 2 *ppp* *f* *ppp* *ppp* *f*

Cl. 3 *ppp* *f* *ppp*

B. Cl.

Sop. Sax.

Alto Sax. *ppp*

Ten. Sax. *ppp* *f*

Bari. Sax.

Bass Sax.

Bsn. 1

Bsn. 2

Hn. 1 *f*

Hn. 2 *f*

Hn. 3 *f*

Hn. 4 *f*

C.Tpt. 1 *f*

C.Tpt. 2 *f*

C.Tpt. 3 *f*

Tbn. 1 *ppp* *mp*

Tbn. 2

B. Tbn.

Tba.

♩=80

4/8

Timp.

Whip *f*

Crot.

B. D. *mf* *ff*

Hp.

Pno.

Cb. *ppp* *mp*

118

Fl. 1  
Fl. 2  
Fl. 3  
Fl. 4  
Ob. 1  
Ob. 2  
Cl. 1  
Cl. 2  
Cl. 3  
B. Cl.  
Sop. Sax.  
Alto Sax.  
Ten. Sax.  
Bari. Sax.  
Bass Sax.  
Hn. 1  
Hn. 2  
Hn. 3  
Hn. 4  
C Tpt. 1  
C Tpt. 2  
C Tpt. 3  
Tbn. 1  
Tbn. 2  
B. Tbn.  
Tbn.  
Timp.  
Whip  
Crot.  
B. D.  
Pno.  
Tub. B.  
Hp.  
Pno.  
Cb.



**♩ = 120** **5/8** **4/8**

Fl. 1 *f* *f* *mp*

Fl. 2 *f* *f* *mp*

Fl. 3 *f* *mp*

Fl. 4 *f* *f* *mp* bend

Ob. 1 *f* *mp* bend

Ob. 2 *ff*

Cl. 1 *f* *mp*

Cl. 2 *f* *mp*

Cl. 3 *ff*

B. Cl. *f* *p*

Sop. Sax. *f* *mp* bend

Alto Sax. *f* *mp* bend

Hn. 1 *f*

Hn. 2 *f*

Hn. 3 *f* *p*

Hn. 4

C.Tpt. 1

C.Tpt. 2

C.Tpt. 3

Tbn. 1 *p* *f*

Tbn. 2 *f* *mp* *f*

B. Tbn. *f* *mp* *pp*

Tba.

**♩ = 120** **5/8** **4/8**

Timp. *p* *f* *mp* *ppp*

Vibraphone *mp* *pp*

Crot.

B. D. *pp* *f* *pp*

Cym. *pp* *f* l.v.

Tub. B.

Hp. *ff* *mp* *pp* with an irregular rhythm; moderately fast

Pno. *fff* *con pedale* *p* *f* *p* *pp* with an irregular rhythm; moderately fast

Cb. *fff* *p* *ppp* ord.

135

Fl. 1

Fl. 2

Fl. 3

Fl. 4

Ob. 1

Ob. 2

Cl. 1

Cl. 2

Cl. 3

B. Cl.

Sop. Sax.

Alto Sax.

Ten. Sax.

Bari. Sax.

Bass Sax.

Bsn. 1

Bsn. 2

Hn. 1

Hn. 2

Hn. 3

Hn. 4

Tbn. 1

Tbn. 2

B. Tbn.

Tba.

Timp.

Vib.

Crot.

B. D.

Cym.

Tub. B.

Hp.

Pno.

Cb.

*ppp*

*p*

*mp*

4/4





Accel. .... 2/4 4/8 =100

145

Fl. 1: air; white noise → tone; *ppp* → *f* → *mf*

Fl. 2: air; white noise → tone; *f* → *mf*

Fl. 3: *f* → *mf*

Fl. 4: *f* → *n*

Ob. 1: *mf* 3

Ob. 2: *mf*

Cl. 1: *ppp* → *mf* → *p* → *mf*

Cl. 2: *n* *p* → *mf* → *p* → *mf*

Cl. 3: *n* *p* → *mf* → *p* → *mf*

B. Cl.: *f*

Sop. Sax.: *mf*

Alto Sax.: *mf*

Ten. Sax.: *mf*

Bari. Sax.: air; white noise; *ppp* → *f*

Bass Sax.: air; white noise; *ppp* → *f*

Bsn. 1: *mf*

Bsn. 2: *mf*

Hn. 1: air; white noise; mouth- piece backwards; *ppp* → *f*

Hn. 2: bend; *p* → *f*

Hn. 3: air; white noise; mouth- piece backwards; *f*

Hn. 4: *f*

C.Tpt. 1: *mf* → *mp* → *pp* → *mp*

C.Tpt. 2: *f*

Tbn. 1: *ppp* → *mf* → *mp* → *pp* → *mp*

Tbn. 2: *ppp* → *mf* → *mp* → *pp* → *mp*

B. Tbn.: *ppp* → *mf* → *mp* → *pp* → *mp*

Tba.: *mf* → *ppp*

2/4 Accel. .... 4/8 =100

6 8 4 8

Timp.: *mf*

Vib.: *p* → *mf* → *p* → *mf* → *p*

Crot.: *pp* → *mp*

Flexatone: *p* → *mf*

Cym.: *ppp* → *mf* → *p*

Tubular Bells: *ppp* → *mf* → *p* → *mf* → *p*

T-t.: *mf*

Hp.: *ff*

Pno.: *f* → *ff* → *p* → *mf* → *p* → *pp*

Cb.: *f* → *mf* → *pp*

Annotations: *ff*, *f subito*, *bisbigliando with irregular pattern*, *sul pont.*

4/8

149

Fl. 1

Fl. 2

Fl. 3

Fl. 4

Ob. 1

Ob. 2

Cl. 1

Cl. 2

Cl. 3

B. Cl.

Sop. Sax.

Alto Sax.

Ten. Sax.

Bari. Sax.

Bass Sax.

Bsn. 1

Bsn. 2

Hn. 1

Hn. 2

Hn. 3

Hn. 4

C.Tpt. 1

C.Tpt. 2

C.Tpt. 3

Tbn. 1

Tbn. 2

B. Tbn.

Tbn.

Timp.

Vib.

Crot.

B. D.

Cym.

Tub. B.

Hp.

Pno.

Cb.

ord.

pp

mp

p

mf

ff

Tam-tam

ord.

mf

822

822

154

2/8 3/8 4/8

Fl. 1 *mp* *p* *pp* *p* *pp* *pp* *p*

Fl. 2 *p* *pp* *p* *pp* *pp* *p*

Fl. 3 *p* *pp* *p* *pp* *pp* *p*

Fl. 4 *pp* *p* *pp* *pp* *p* *pp*

Ob. 1 *mp*

Ob. 2 *mp*

Cl. 1 *p* *pp* *pp*

Cl. 2 *p* *pp* *pp* *p*

Cl. 3 *mf* *p* *pp* *p*

B. Cl. *p* *pp* *pp* *p*

Sop. Sax. *ppp* *mp*

Alto Sax. *ppp* *mp*

Ten. Sax. *ppp* *mp*

Bsn. 1 *ppp* *mp*

Bsn. 2 *ppp* *mp*

Hn. 1 *pp* *mf* *p*

Hn. 2 *pp* *mf* *mp* *ppp*

Hn. 3 *mf* *ppp*

Hn. 4 *mf* *p*

C.Tpt. 1 *pp* *mf* *mp*

C.Tpt. 2 *pp* *mf* *mp*

C.Tpt. 3 *pp* *mf* *mp*

Tbn. 1 *p* *f* *p* *ppp*

Tbn. 2 *f* *p* *f* *ppp*

B. Tbn. *p* *f* *p* *ppp*

Tba. *ppp*

Timp. *mp* *mf* *p* *ppp*

Vib. *mp* *f* *l.v.*

T.-t. *pp* *mf* *mp*

B. D.

Cym. *p* *mf* *mp*

Tub. B. *mp* *f* *l.v.*

Hp. *f* *mp* *pp*

Pno. *mp* *ff* *mp* *l.v.*

Cb. *ff* *mp*

159

Fl. 1 *pp* *p* *f*

Fl. 2 *pp* *p* *f*

Fl. 3 *pp* *p* *f*

Fl. 4 *p* *f*

Ob. 1 *air*

Ob. 2 *air*

Cl. 1 *p* *pp* *pp* *p*

Cl. 2 *pp* *pp* *p*

Cl. 3 *pp* *pp* *p*

B. Cl. *pp* *pp* *p* *pp* *pp* *f* *harmonic glissando*

Sop. Sax. *air*

Alto Sax. *air*

Ten. Sax. *air*

Bsn. 1 *air*

Bsn. 2 *air*

Hn. 1 *pp* *f*

Hn. 2 *pp* *f*

Hn. 3 *p* *f* *air; white noise mouth-piece backwards*

Hn. 4 *p* *f* *air; white noise*

C Tpt. 1 *p* *f* *air; white noise*

C Tpt. 2 *p* *f* *air; white noise*

C Tpt. 3 *p* *f* *air; white noise*

Tbn. 1 *p* *f* *air; white noise*

Tbn. 2 *p* *f* *air; white noise*

B. Tbn. *p* *f* *air; white noise*

Timp. *p* *f*

Vib. *pp* *ff* *L.v.*

T.-t. *mf* *L.v.* *soft mallet*

B. D. *p* *ff*

Cym.

Tub. B.

Hp. *ff* *L.v.*

Pno. *pp* *ff* *L.v.*

Cb. *pp* *ff* *IV*

165

Fl. 1

Fl. 2

Fl. 3

Fl. 4

Ob. 1

Ob. 2

Cl. 1

Cl. 2

Cl. 3

B. Cl.

Sop. Sax.

Alto Sax.

Ten. Sax.

Bari. Sax.

Bass Sax.

Bsn. 1

Bsn. 2

Hn. 1

Hn. 2

Hn. 3

Hn. 4

C Tpt. 1

C Tpt. 2

C Tpt. 3

Tbn. 1

Tbn. 2

B. Tbn.

Tba.

Timp.

Vib.

Crot.

B. D.

Cym.

Tub. B.

Hp.

Pno.

Cb.

harmonic glissando

air; white noise

mouth- piece backwards

metal brush; rub skin

soft mallet

pp

p

f

mp

ff

mf



Fl. 1, Fl. 2, Fl. 3, Fl. 4, Ob. 1, Ob. 2, Cl. 1, Cl. 2, Cl. 3, B. Cl., Sop. Sax., Alto Sax., Ten. Sax., Bsn. 1, Bsn. 2, Hn. 1, Hn. 2, Hn. 3, Hn. 4, C.Tpt. 1, C.Tpt. 2, C.Tpt. 3, Tbn. 1, Tbn. 2, B. Tbn., Tba.

Annotations: *harmonic glissando*, *pp*, *f*, *ppp*, *mf*, *pp*, *ff*, *mf subito*, *mp*.

Performance instructions for Saxophones:  
 play legato in a descending pattern  
 ad lib. at a moderate tempo



Temp., Vib., Crot., B. D., Cym., Tub. B., Hp., Pno., Cb.

Annotations: *p*, *mf*, *f*, *ff*, *mf*, *ppp*.

Performance instructions for Percussion:  
 metal brush; rub skin  
 drum stick; rim  
 Whip  
 Vibraphone l.v.  
 Tam-tam l.v.

176

Fl. 1 *half tone-half air* *mp*

Fl. 2 *half tone-half air* *mp*

Fl. 3 *half tone-half air* *mp*

Fl. 4 *half tone-half air* *mp*

Ob. 1 *mf* *p* *pp*

Ob. 2 *mf* *p* *pp*

Cl. 1

Cl. 2

Cl. 3 *pp* *mf* *pp*

B. Cl.

Sop. Sax. *ppp*

Alto Sax. *ppp*

Ten. Sax. *ppp*

Bari. Sax.

Bass Sax.

Bsn. 1

Bsn. 2

Hn. 1

Hn. 2

Hn. 3

Hn. 4

C Tpt. 1

C Tpt. 2

C Tpt. 3 *mf* *p*

Tbn. 1

Tbn. 2

B. Tbn.

Tba.

Timp.

Vib.

T. t.

B. D.

Cym.

Tub. B.

Hp.

Pno.

Cb.

Fl. 1 *ff* *f* *mf* *mp* *p* → air

Fl. 2 *ff* *f* *mf* *mp* *p* → air

Fl. 3 *ff* *f* *mf* *mp* *p* → air

Fl. 4 *ff* *f* *mf* *mp* *p* → air

Ob. 1

Ob. 2

Cl. 1 *f* *pp*

Cl. 2 *mf* *pp* *p* *f* *p* *f* *p*

Cl. 3 *f* *mp* *f*

B. Cl.

Sop. Sax.

Alto Sax.

Ten. Sax.

Bari. Sax.

Bass Sax.

Bsn. 1

Bsn. 2

Hn. 1

Hn. 2

Hn. 3

Hn. 4

C Tpt. 1

C Tpt. 2

C Tpt. 3

Tbn. 1 *mp*

Tbn. 2 *mp*

B. Tbn.

Tba.

Timp.

Vib.

T-t.

B. D.

Cym.

Tub. B.

Hp.

Pno.

Cb.



188

Fl. 1 *pp* *n* *pp* *slow wide vib.*

Fl. 2 *pp* *n* *pp* *slow wide vib.*

Fl. 3 *mp* *n* *f* *pp* *slow wide vib.*

Fl. 4 *mp* *f*

Ob. 1 *mf*

Ob. 2 *mf*

Cl. 1 *f* *pp* *f* *pp* *f* *mp* *f*

Cl. 2 *f* *pp* *f* *pp* *f* *mp* *f*

Cl. 3 *f* *mp* *f* *mp* *f* *mp* *f* *pp* *f*

B. Cl. *f*

Sop. Sax.

Alto Sax.

Ten. Sax.

Bari. Sax.

Bass Sax. *mf*

Bsn. 1 *mf*

Bsn. 2 *mf*

Hn. 1 *p* *f* *air; white noise mouth-piece backwards*

Hn. 2 *p* *f* *air; white noise mouth-piece backwards*

Hn. 3 *p* *f* *air; white noise mouth-piece backwards*

Hn. 4 *mf*

C. Tpt. 1 *mf*

C. Tpt. 2 *mf*

C. Tpt. 3 *mf*

Tbn. 1 *mf*

Tbn. 2 *mf*

B. Tbn. *mf*

Tba. *mf*

Timp.

Vibraphone

Vib. *mp* *f*

T.-t. *mf*

B. D. *mf* *p*

Cym. *mf*

Tub. B.

Hp. *p* *ff* *mf*

Pno. *ff*

Cb. *ff*





Fl. 1 *f*

Fl. 2 *f*

Fl. 3 *f*

Fl. 4 *f*

Ob. 1

Ob. 2

Cl. 1 *mf*

Cl. 2 *mf*

Cl. 3 *mf*

B. Cl.

Sop. Sax.

Alto Sax. *mf*

Ten. Sax. *mf*

Bari. Sax.

Bass Sax.

Bsn. 1 *mf* *p* *mf* *p* *mf* *p*

Bsn. 2 *p* *mf* *p* *mf* *p*

Hn. 1

Hn. 2

Hn. 3

Hn. 4

C. Tpt. 1 *mf*

C. Tpt. 2 *mf*

C. Tpt. 3 *mf*

Tbn. 1

Tbn. 2

B. Tbn.

Tba.

Timp. *f*

Vib.

Crot.

B. D. *mf*

Cym. *pp* *n*

Tub. B.

Hp. *ff*

Pno. *ff*

Cb. *ff* *f subito*

metal brush; rub skin *p*

♩ = 120

211

Fl. 1 *ff* *air* *f* ord. *mp*

Fl. 2 *ff* *air* *f* ord. *mp*

Fl. 3 *ff* *air* *f* ord. *mp*

Fl. 4 *ff* *air* *f* ord. *mp*

Ob. 1 *mp*

Ob. 2 *mp*

Cl. 1 *f* *mp*

Cl. 2 *f* *mp*

Cl. 3 *f* *mp*

B. Cl. *f* *mp*

Sop. Sax. *f* *mp* *f* *mp* *f* *mp* *f* *mp*

Alto Sax. *p* *f p subito* *f* *f* *mp* *f*

Ten. Sax. *f* *mp* *f* *mp* *f* *mp* *f* *mp*

Bari. Sax. *f* *ppp*

Bass Sax. *f* *ppp*

Bsn. 1 *f* *ppp*

Bsn. 2 *f* *ppp*

Hn. 1 *p* *mf* *p* *mf* *p* *mf* *p* *mf*

Hn. 2 *p* *mf* *p* *mf* *p* *mf* *p* *mf*

Hn. 3 *f* *mf* *p* *mf* *p* *mf* *p* *mf*

Hn. 4 *mf* *p* *mf* *p* *mf* *p* *mf* *p* *mf*

C.Tpt. 1 *mf* *p* *mf* *p* *mf* *p* *mf* *p* *mf* *p* *mf*

C.Tpt. 2 *ff* *mf* *p* *mf* *p* *mf* *p* *mf* *p* *mf*

C.Tpt. 3 *mf* *p* *mf* *p* *mf* *p* *mf* *p* *mf*

Tbn. 1 *ff* *f* *mf*

Tbn. 2 *ff* *f* *mf*

B. Tbn. *ff* *f* *mf*

Tba. *ff* *f* *mf*

3/8 4/8 ♩ = 120 6/8 4/8

Timp. *mf* *pp*

Vib. *p* *f*

Crot. *p* *f*

string drum *f* *mf* *p*

B. D. *f* *mf* *p*

Cym. *ppp* *f* *mf*

Tub. B. *f* *mf*

Hp. *ff* *f*

Pno. *ff* *f*

Cb. *ff* *f* *sul pont.* *(tr)*



223

4/8

223

Fl. 1, Fl. 2, Fl. 3, Fl. 4, Ob. 1, Ob. 2, Cl. 1, Cl. 2, Cl. 3, B. Cl., Sop. Sax., Alto Sax., Ten. Sax., Bari. Sax., Bass Sax., Bsn. 1, Bsn. 2, Hn. 1, Hn. 2, Hn. 3, Hn. 4, C Tpt. 1, C Tpt. 2, C Tpt. 3, Tbn. 1, Tbn. 2, B. Tbn., Tba.

224

224

Timp., Vib., Crot., B. D., Cym., Tubular Bells, T.-t., Hp., Pno., Cb.

♩=120

229

2/8 1/8 4/8

Fl. 1, Fl. 2, Fl. 3, Fl. 4, Ob. 1, Ob. 2, Cl. 1, Cl. 2, Cl. 3, B. Cl., Sop. Sax., Alto Sax., Ten. Sax., Bari. Sax., Bass Sax., Bsn. 1, Bsn. 2, Hn. 1, Hn. 2, Hn. 3, Hn. 4, C.Tpt. 1, C.Tpt. 2, C.Tpt. 3, Tbn. 1, Tbn. 2, B. Tbn., Tba., Timp., Vib., Crot., B. D., Cym., Tub. B., Hp., Pno., Cb.

*f*, *mp subito*, *f*, *mf*, *p*, *ff*, *mf*, *pp*, *ppp*, *mf*, *ff*, *1/2 pedal*

Bass Drum drum stick on rim string drum

l.v. Tam-tam l.v. Crotales



♩ = 120

4/8

Fl. 1, Fl. 2, Fl. 3, Fl. 4, Cl. 1, Cl. 2, Cl. 3, B. Cl., Sop. Sax., Alto Sax., Ten. Sax., Bari. Sax., Bass Sax., Hn. 1, Hn. 2, Hn. 3, Hn. 4, C.Tpt. 1, C.Tpt. 2, C.Tpt. 3, Tbn. 1, Tbn. 2, B. Tbn., Tba.

♩ = 120

4/8

Timp., Vib., T.-t., B. D., Cym., Tub. B., Hp., Pno., Cb.

1/2 pedal





252

Fl. 1

Fl. 2

Fl. 3

Fl. 4

Ob. 1

Ob. 2

Cl. 1

Cl. 2

Cl. 3

B. Cl.

Sop. Sax.

Alto Sax.

Ten. Sax.

Bari. Sax.

Bass Sax.

Bsn. 1

Bsn. 2

Hn. 1

Hn. 2

Hn. 3

Hn. 4

C.Tpt. 1

C.Tpt. 2

C.Tpt. 3

Tbn. 1

Tbn. 2

B. Tbn.

Tba.

Timp.

Cym.

Crot.

B. D.

Cym.

Tub. B.

Hp.

Pno.

Cb.

*mp*

*pp*

*p* — *mp*

*pp*

*f*

choke

Tam-tam

Snare Drum rim shot

*mf*

*pizz.*

*ff*

259 rit. ----- ♩=75

222

Fl. 1

Fl. 2

Fl. 3

Fl. 4

Ob. 1

Ob. 2

Cl. 1

Cl. 2

Cl. 3

B. Cl.

Sop. Sax.

Alto Sax.

Ten. Sax.

Bari. Sax.

Bass Sax.

Bsn. 1

Bsn. 2

Hn. 1

Hn. 2

Hn. 3

Hn. 4

C Tpt. 1

C Tpt. 2

C Tpt. 3

Tbn. 1

Tbn. 2

B. Tbn.

Tba.

rit. ----- ♩=75

222

Timp.

Cym.

T. c.

B. D.

S. D.

Tub. B.

Hp.

Pno.

Cb.

choke

f

l.v.

ff

T